



180Degrees  
CONSULTING  
— SGGSCC —

# GUESSTIMATE TUITION FEE OF HOGWARTS

# OVERVIEW

Guesstimate of annual student Expenditure at Hogwarts School of Witchcraft and Wizardry



180Degrees  
CONSULTING  
— SGGSCC —

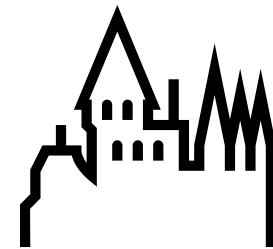
## ASSUMPTIONS

### SIZE OF HOGWARTS



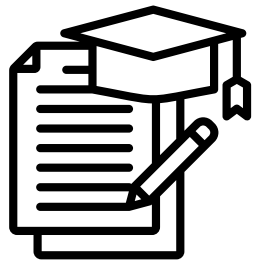
*Hogwarts accommodates approximately 1000 students over 7 years.*

### BOARDING SCHOOL



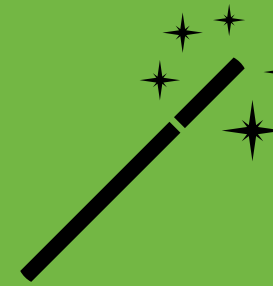
*As a boarding school, all costs related to food, accommodation, utilities, and dormitory are included*

### COURSE DURATION



*A standard Hogwarts education lasts for 7 years.*

### MAGICAL SUPPLIES



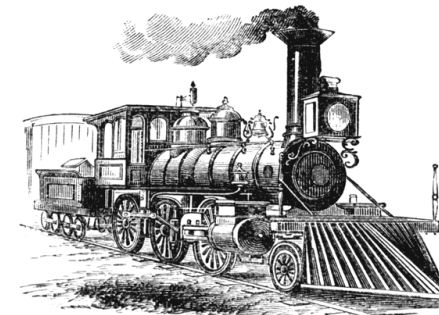
*Includes wands, potions ingredients, broomsticks, and other magical equipment.*

### CURRICULUM



*The curriculum includes a mix of magical subjects (e.g., Potions, Dark Arts) and basic subjects (e.g., English, Muggle Studies).*

### TRANSPORTATION



*Students use the Hogwarts Express to travel between home and school.*

# BREAKDOWN OF COST

calculating the cost of Hogsmeade Trip



180Degrees  
CONSULTING  
— SGGSCC —

## BREAKDOWN OF STUDENT EXPENDITURE

### TUITION FEE COSTS

Castle Maintenance  
Costs  
**£10,000**

Food &  
Accommodation costs  
**£11,000**

Salaries of professors  
& staff  
**£1,460**

### PERSONAL EXPENSES

Special classes  
**£300**

Transportation  
costs  
**£24**

Magic Supplies  
& Books  
**£500**

Hogsmeade Trip  
**£120**

## CASTLE MAINTENANCE COST

General Repairs  
**£7,000,000**

Magical  
Reinforcement  
**£2,000,000**

Quidditch Stadium  
Maintenance  
**£1,000,000**

Library & Potions Lab  
Maintenance  
**£500,000**

Other Enchanted Areas  
**£1,500,000**

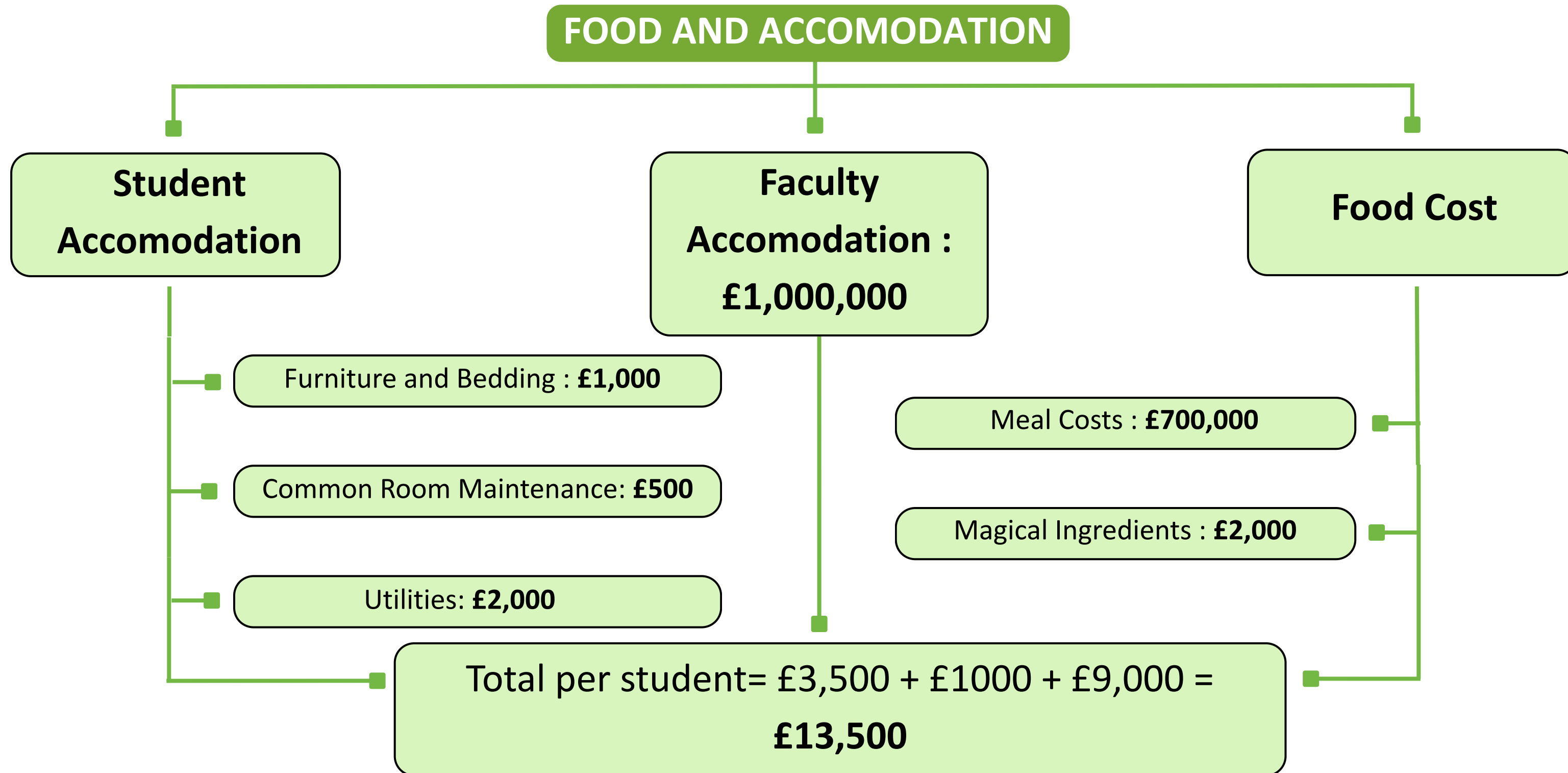
Cost per student =  $\frac{£10,000,000}{1,000} = \text{£10,000}$

# BREAKDOWN OF STUDENT EXPENDITURE

*calculating the cost of books and magic supplies*



180Degrees  
CONSULTING  
— SGGSCC —

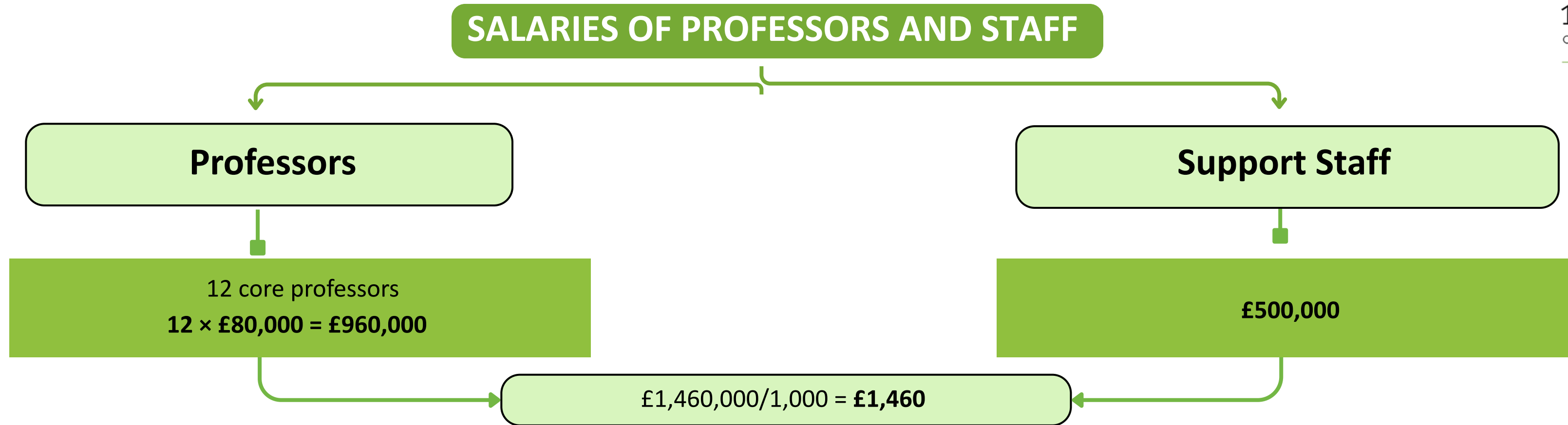


# BREAKDOWN OF STUDENT EXPENDITURE

calculating the cost of books and magic supplies



180Degrees  
CONSULTING  
— SGGSCC —

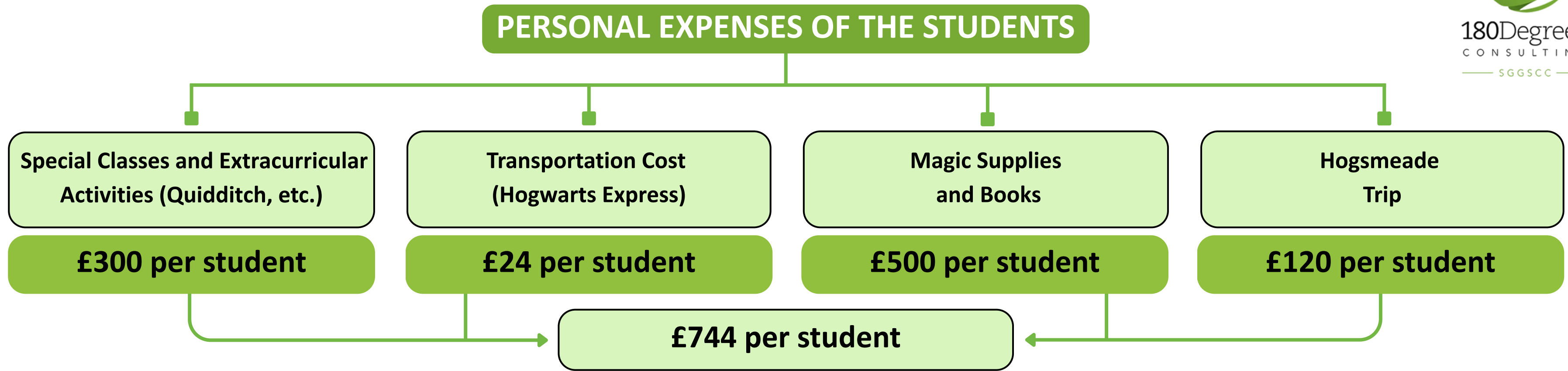


**Total Tuition Fee Cost Per Student  
(School-Related Expenses) :**

EXPENSE TYPE	COST (GBP)
CASTLE MAINTAINENCE	£10000
FOOD & ACCOMMODATION	£13500
SALARIES OF PROFESSORS & STAFF	£1460
<b>Total Tuition Costs</b>	<b>£24960</b>

# BREAKDOWN OF STUDENT EXPENDITURE

calculating the personal expenses of students



## PERSONAL EXPENSES PER STUDENT:

EXPENSE TYPE	COST (GBP)
SPECIAL CLASSES & EXTRACURRICULAR ACTIVITIES	£300
TRANSPORTATION (HOGWARTS EXPRESS)	£24
MAGIC SUPPLIES AND BOOKS	£500
HOGSMEADE TRIPS	£120
<b>Total Personal Expenses</b>	<b>£744</b>

## BREAKDOWN OF STUDENT EXPENDITURE

*calculating the cost of books and magic supplies*



### ***Grand Total Annual Cost Per Student***

EXPENSE TYPE	COST (GBP)
<i>TUITION FEE (SCHOOL-RELATED EXPENSES)</i>	<i>£24960</i>
<i>PERSONAL EXPENSES</i>	<i>£744</i>
<b><i>TOTAL ANNUAL COST</i></b>	<b><i>£25704</i></b>

### ***Scaling upto 1,000 students***

- If Hogwarts accommodates 1,000 students, the total annual costs for all students would be:

**Total Annual Cost for 1,000 students=1,000×£25,704=£25,704,000 per year**

# BREAKDOWN OF STUDENT EXPENDITURE

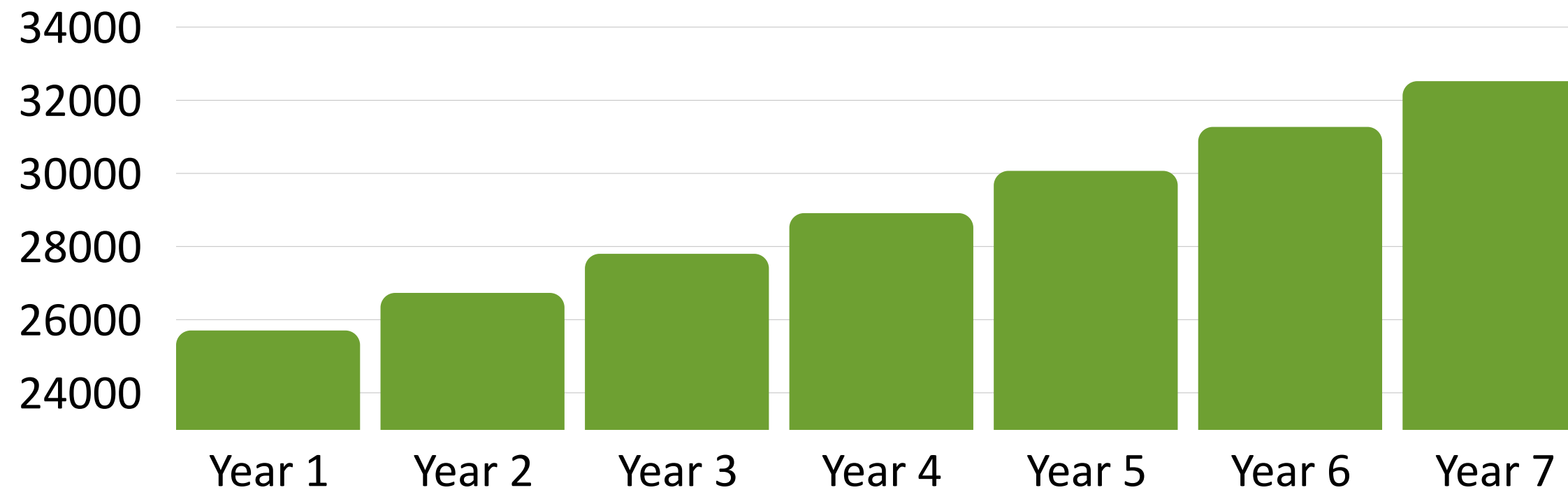
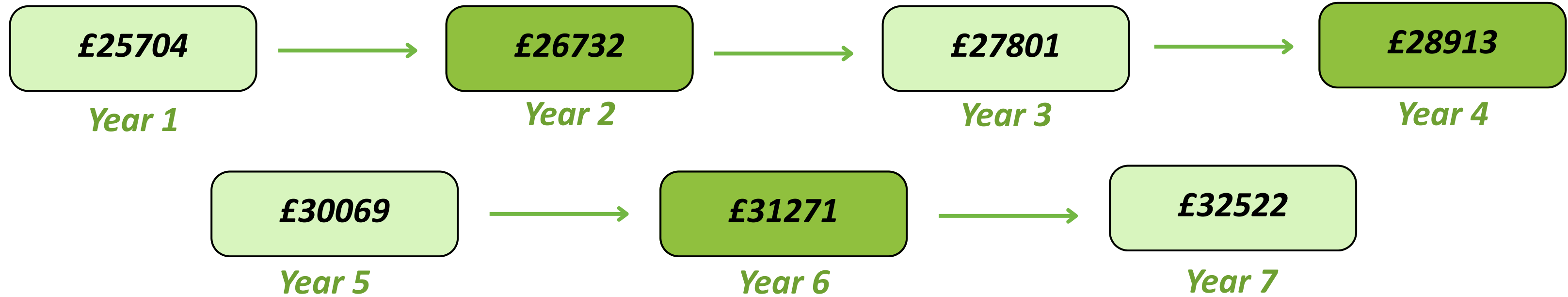
*adjusting for inflation*



180Degrees  
CONSULTING  
— SGGSCC —

**Total Cost per Student : £25704**

**Rate of Inflation: 4%**





# BREAKDOWN OF STUDENT EXPENDITURE

*calculating the cost of books and magic supplies*

---



180Degrees  
CONSULTING  
— SGGSCC —

## ***Conversion Rate:***

- 1 Galleon = £5
- Now, we can convert £21,154,000 into Galleons by dividing by 5:
- Total in Galleons=£25,704,000 divided by 5 =5,140,800 Galleons

## ***Summary:***

- Total in GBP: £25,704,000
- Conversion Rate: 1 Galleon = £5
- Total in Galleons: 5,140,800 Galleons
- So, **£25,704,000 per year is equivalent to 5,140,800 Galleons in the Harry Potter currency.**



**CHECK OUT OUR WEBSITE  
FOR MORE INSIGHTS**